

TEKLYNX®

# CODESOFT® V. 9

SETTING THE STANDARD



BAR CODE LABELING AND INTEGRATION SOFTWARE

Setting the Standard  
**TEKLYNX**  
BAR CODE SOFTWARE



# CODESOFT® V. 9

## UNMATCHED EASE OF USE, FLEXIBILITY AND POWER FOR ENTERPRISE-WIDE LABEL PRINTING

CODESOFT 9 has been improved with an emphasis on interface design, usability, and ergonomics – making it the easiest to use for label design and printing in an enterprise environment. Whether you are connecting directly to a database or looking for advanced data manipulation, CODESOFT 9 is the most powerful option in the industry.

## UNMATCHED EASE OF USE

The most powerful bar code software for Enterprise environments is now the easiest to use. Whether you need to design a label, connect to a database, or create complex bar codes such as HIBC or GS1 Databar, new Wizards in CODESOFT 9 make bar code label creation quick and easy.

**Database Variables Wizard** connects your label to a database with two quick clicks.

**TableLookup Wizard** easily links your label to multiple databases simultaneously.

**Database Connection Wizard** creates a database connection to the most common databases (Access, Excel, SQL Server, Oracle, etc.).

**Graphical Query Builder** makes it easier to create simple or complex database queries in a graphical way and includes a color syntax editor. For advanced users, the SQL mode is still available.

**New Formula Wizard** quickly builds a formula in just a few mouse clicks.

**HIBC and GS1 Databar Wizards** easily create complex industry standard bar codes.

**Variable Filters** use conditional queries, which allow you to change your record set at any time by modifying variable values.

**Expanded Image Library** allows you to incorporate any image format (.jpg, .bmp, .tif, .eps) into your label design.

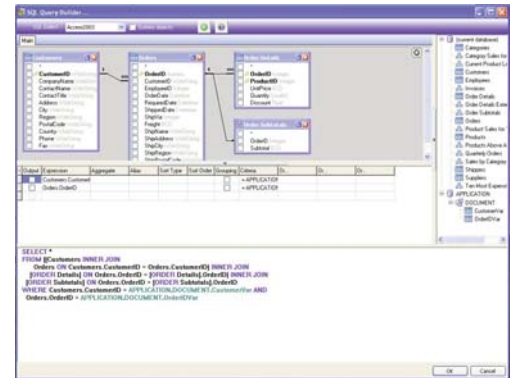
## FLEXIBILITY

**Label Comparison Tool** – With this new tool, you can compare the details of your label, such as:

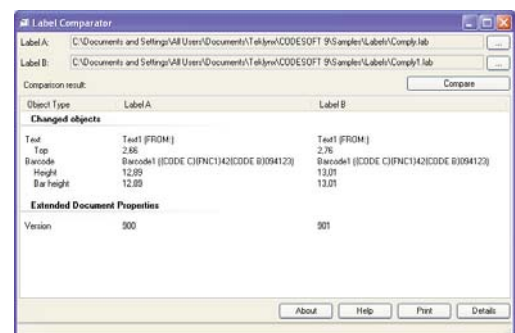
- Objects and their properties
- Data sources and their properties
- Label/page format
- Document properties

A detailed report allows you to navigate between the differences using a tree view.

**Form Display** – CODESOFT displays the label next to the variable data form so you can preview the label as you make changes. The form can be resized and customized. Variables can be modified at print time, all at once, or one by one.



Graphical Query Builder



Label Comparison Tool

## POWERFUL INTEGRATION FEATURES

CODESOFT offers the most powerful integration options in the industry – allowing you unparalleled options to create custom printing interfaces and automate the label printing process.

**DotNet Wrapper** allows for seamless integration with products that use different technologies. As more and more integration projects use the .NET technology in either C# or VB.net - this new wrapper will make integration easier for developers.

Integrators who develop in .NET now can choose between the CODESOFT ActiveX interface or the CODESOFT .NET interface.

**ActiveX Automation** gives developers the ability to create and print labels dynamically from their own applications by programming through Visual.Net, Windows Scripting, Visual Basic, Visual C, Delphi and many other languages.

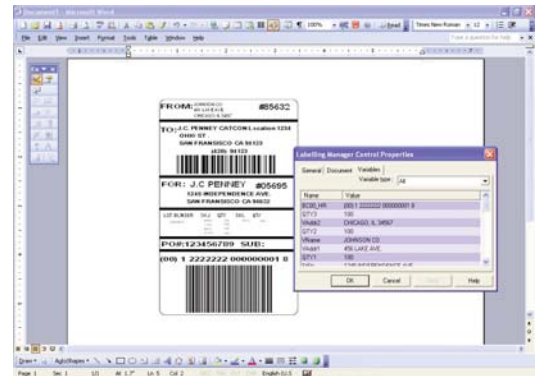
**OCX Component** exports labels into external applications (for example, Microsoft Word).

**OCX Field** lets you integrate an external OCX component (for example, a clock or calendar) into a label and modify or edit its parameters.

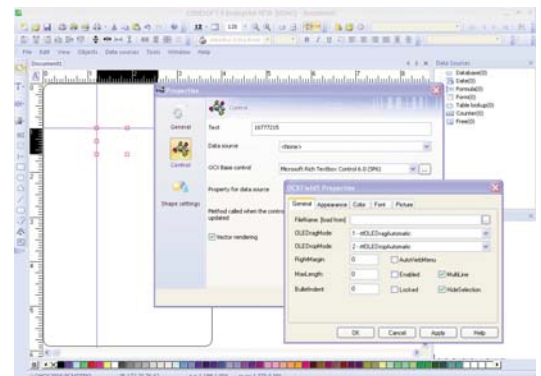
**Form Designer/Viewer** makes it possible to create/view customer front-end user interface screens for data entry and label printing.

**Command File Interpreter (CFI)** is an easy to use utility for printing labels automatically.

**Printer Object File (POF)** helps you create and modify printer object files through a user-friendly interface.



OCX Component



OCX Field

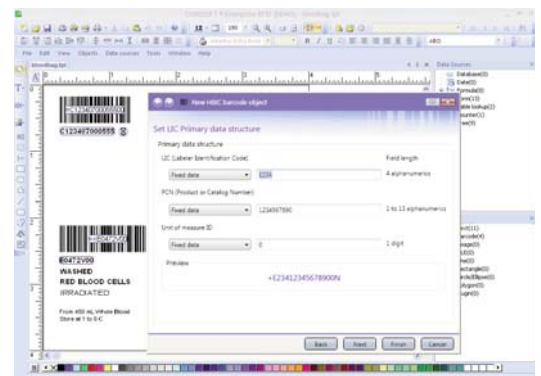
## CROSS-COMPATIBILITY

**SENTINEL Print Pack** allows Enterprise-wide label printing from one central location.

**LABEL ARCHIVE** allows you to organize and control your labeling environment at the server level.

## UNPARALLELED PRINTER SUPPORT

CODESOFT supports over 2,100 thermal/thermal transfer printers as well as any Windows-based printer. With CODESOFT's high-speed, bi-directional drivers you can take advantage of every feature of your printer to print large runs of labels in a very short time. With its intuitive interface, operators can easily specify printer options including print speed, cut settings, real date/time stamps (ISO), etc.



HIBC and GS1 Databar Wizards



FEATURE	L	P	E
<b>General</b>			
Print-only and network versions available			•
Number of connected printers	1	1 or 3	Unlimited
Windows Printers	None	Default	Unlimited
WYSIWYG label design	•	•	•
Full UNICODE support	•	•	•
Multi-lingual user interface (24 languages)	•	•	•
Wizard-based user interface (New Label, GS1, HIBC, Database, and more)	•	•	•
Drag-and-drop label design	•	•	•
Password protection on documents/labels			•
Lock/unlock objects			•
Live preview of graphics and labels	•	•	•
Hidden (unprintable) objects		•	•
Group and ungroup objects	•	•	•
Automatic resizing of objects (Fit to Frame)			•
Color text and printing	•	•	•
Reversed text (foreground/background)	•	•	•
Native (printer) and graphic bar codes	•	•	•
Over 100 industry-standard bar codes	•	•	(Circular)
Add background pictures to labels and documents			•
OLE objects for insertion of external objects or documents	•	•	•
TextArt (allows curved and rotated text)	•	•	•
Rich Text Fields			•
Table Lookup		•	•
Display multiple records on the same label (List field)			•
Compliance label templates (Military DoD, Healthcare, Shipping, and more)	•	•	•
Multi-tabbed label design	•	•	•
Copy and paste objects between multiple labels	•	•	•
OCX Field			•
Object Order	•	•	•
<b>Tools</b>			
Printer code converter		•	•
Printing Logfile (label name, printer, user, and more)			•
Directly modify printer code (Job Modifier)	•	•	•
Download fonts to thermal printers (Font Downloader)	•	•	•
Define user access rights (User Manager)			•
Retrieve data from serial devices (COMet)		•	•
Export label as a graphic for use in other applications			•
Import labels from FTP			•
Import printer code from other applications	•	•	•
RFID tag support			•
Label Comparison Tool			•
True Type Font Substitution			•

## 1-Year SMA included with every purchase!

Now, with each purchase of CODESOFT 9, a 1-year SMA will be included.

### SMA's provide you with :

- Access to updates any time you like
- Access to the latest drivers
- Free e-training guides for the registered product
- Protection for your registered TEKLYNX software against any future technological developments

You can also upgrade your SMA to a 3- or 5-year plan, or include unlimited support by upgrading to an SMA Gold (1, 3, or 5 years).

TEKLYNX<sup>®</sup> software **MAINTENANCE** AGREEMENT



FEATURE	L	P	E
<b>Add-ons</b>			
Command File Interpreter (CFI) - Automated printing		•	•
Printer Object Files (POF) - Export printer code			•
Form Viewer - View custom-made forms for data entry/bar code scan and print			•
Form Designer - Create custom interface			•
<b>Programmability</b>			
ActiveX Basic		•	•
Command line, ActiveX version 1 and 2, .NET Wrapper			•
<b>Database Management</b>			
Database wizard	•	•	•
Database Manager with batch printing options	•	•	•
OLE DB / ODBC / ASCII database connectivity	•	•	•
Access multiple tables simultaneously			•
Filters on tables	•	•	•
SQL mode/query builder (advanced users)			•
Create/edit query	•	•	•
Save query			•
Grid view/print	•	•	•
<b>Data Source Management</b>			
Flexible date/time stamping (real time and offset)	•	•	•
Select value from custom list (Pick List)	•	•	•
Variable graphic images	•	•	•
Shared variables on multiple labels	•	•	•
Control the display of variable data (Output Mask)	•	•	•
Counting bases (6 bases and custom)	(Limited)	(Limited)	(All)
Advanced counters (linked, shared, rollover)			•
Accumulate value	•	•	•
Combine data or multiple fields in object	•	•	•
<b>Form Management</b>			
Customizable for errorproof data entry	•	•	•
Require specific input data (Input Mask)	•	•	•
Define minimum input length	•	•	•
Automatic prompt	•	•	•
<b>Cross Compatibility</b>			
Integration with SAP, LIMS, and other ERP systems (SENTINEL)			•
Reprint & version control for audit compliance (LABEL ARCHIVE)			•
Print from a mobile device (IDEAM)			•



**United States**  
1-414-228-3335

**France**  
33-562-601-080

**Germany**  
49-6103-30026-0

**Singapore**  
65-6477-7293

**China**  
86-21-6100-6588

**Japan**  
81-45-461-3603

Copyright 2009 Braton Group sarl. All rights reserved. Printed in the USA 11/09. TEKLYNX, CODESOFT, IDEAM, and SENTINEL are trademarks or registered trademarks of Braton Group sarl or its affiliated companies. All other brands and product names are trademarks and/or copyrights of their respective owners.

