

TEKLYNX®

# SENTINEL™

S/5



PRINT MANAGEMENT SOFTWARE



SENTINEL S/5

# The Most Flexible and Powerful



## SENTINEL Advantages

AUTOMATED PRINT  
MANAGEMENT.

LOWERS COST.

REDUCES ERRORS AND  
IMPROVES CAPACITY.

MINIMIZES DATA MANIPULATION  
ON THE HOST SIDE.

SENTINEL S/5,  
For real-time print management solutions in  
any production environment.

# Real-Time Solution for Print Management

## The Standard and Unique Bar Coding Middleware Solution in the Industry.

SENTINEL S/5 host connectivity software allows enterprise wide label printing and management from one central location.

This advanced label print server application enables you to print labels and documents from any platform.

It is a middleware application that runs on Windows® NT, 2000 or 2003 server and easily integrates into virtually any ERP, MRP II or WMS system — allowing data from a host application to be merged with a label designed with CODESOFT or LABELVIEW software .

### How it Works:

SENTINEL waits for an event (the presence of data from another system).

When data arrives the process begins:

#### 1. Data Input.

Data can arrive to SENTINEL via a TCP/IP port, as a data file saved to a "watch" directory, as a file printed to a virtual printer or via a Data Collection Server, IDEAM Server.

#### 2. Processing.

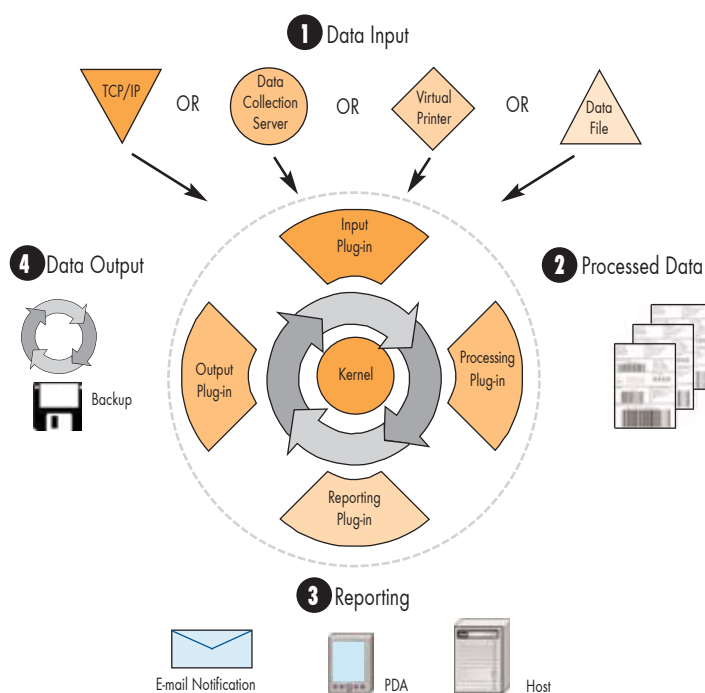
Data is then processed based on predetermined rules (defined as a "map") and printed through the print engine.

#### 3. Reporting.

Reporting information can be e-mailed in real-time to an administrator to indicate a problem and activities can be logged for historical purposes.

#### 4. Output.

Data can be outputted for archiving or as input to another watch.



# The Application Modules

The application consists of three independent modules, connected to a kernel application. The kernel is the core application that handles the print requests and manages the communications between each module. This kernel application runs as a Windows® NT, 2000 or 2003 service, providing security to the entire system.

## Sentinel Manager

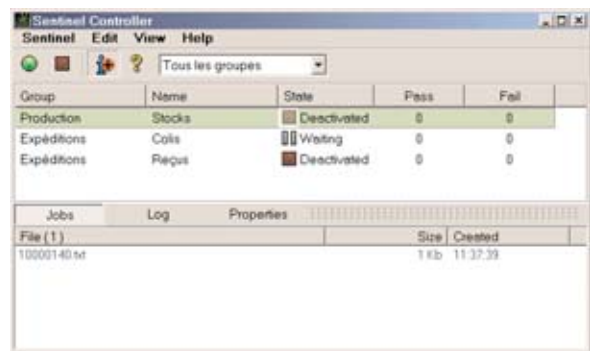
Designed specifically for the IT Manager, the Sentinel Manager allows you to create, configure and manage the sentinels that will analyze your data files. It also allows you to select printers.



Sentinel Manager allows you to configure, create and manage sentinels

## Sentinel Controller

The Sentinel Controller allows you to view sentinel status, enable or disable individual sentinels and display the error log files.

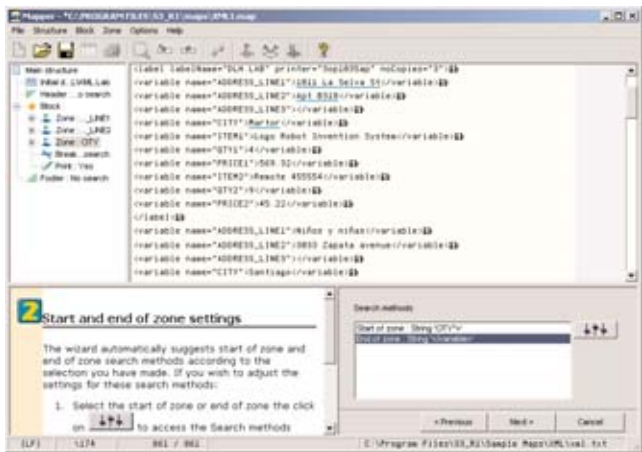


Use the Sentinel Controller to activate, deactivate and check individual sentinels

## Mapper

The Mapper allows you to create and configure mapfiles, which will be used for analyzing your data files. A map file describes the structure of the data files for analysis and assigns the mapped data to the corresponding variables in the label document.

The Mapper uses a wizard to take you through the map process step-by-step to ensure that your data conversion is an easy and successful process.



The Mapper is used to define the structure of the data files the sentinels will analyze

FEATURES	BENEFITS
Mapper	Allows for complex data from any output stream to be mapped to bar code and/or text fields without the need for custom programming
Device Support	More than 1000 devices supported from more than 50 manufacturers
Runs as a service on Windows® NT, 2000 or 2003 server	Unattended system start-up in case the server ever goes down
Multiple data input methods	Flexibility to choose the file transfer method from your applications
Multi-threaded architecture	Maximizes the use of processor time and allows for simultaneous printing on multiple printers
High speed label printing	Specialized printer drivers developed in cooperation with the printer manufacturers
Unicode compatibility	Opens any Unicode Database CODESOFT® 8
IDEAM Server Plug-in : the data collection bridge	Provides a complete and unique solution from data collection to label printing

## System Requirements

- Windows NT, 2000 or 2003 server
- 128 MB RAM (256 recommended)
- Pentium III or IV 500 MHz (1 GHz recommended) Multi-processor capable
- 200 MB hard disk space

# SENTINEL™ S/5

## SENTINEL Strengths

### PLATFORM AND PRINTER INDEPENDENT

The host application can run on any platform—PC, Mini or Mainframe. SENTINEL is installed on a server running under a Windows® platform.

Any virtual network connection (LAN/WAN) can be used. SENTINEL requires no specific device or adapter and uses standard communication protocol.

SENTINEL is compatible with more than 1000 different thermal printers or any Windows® supported printer driver.

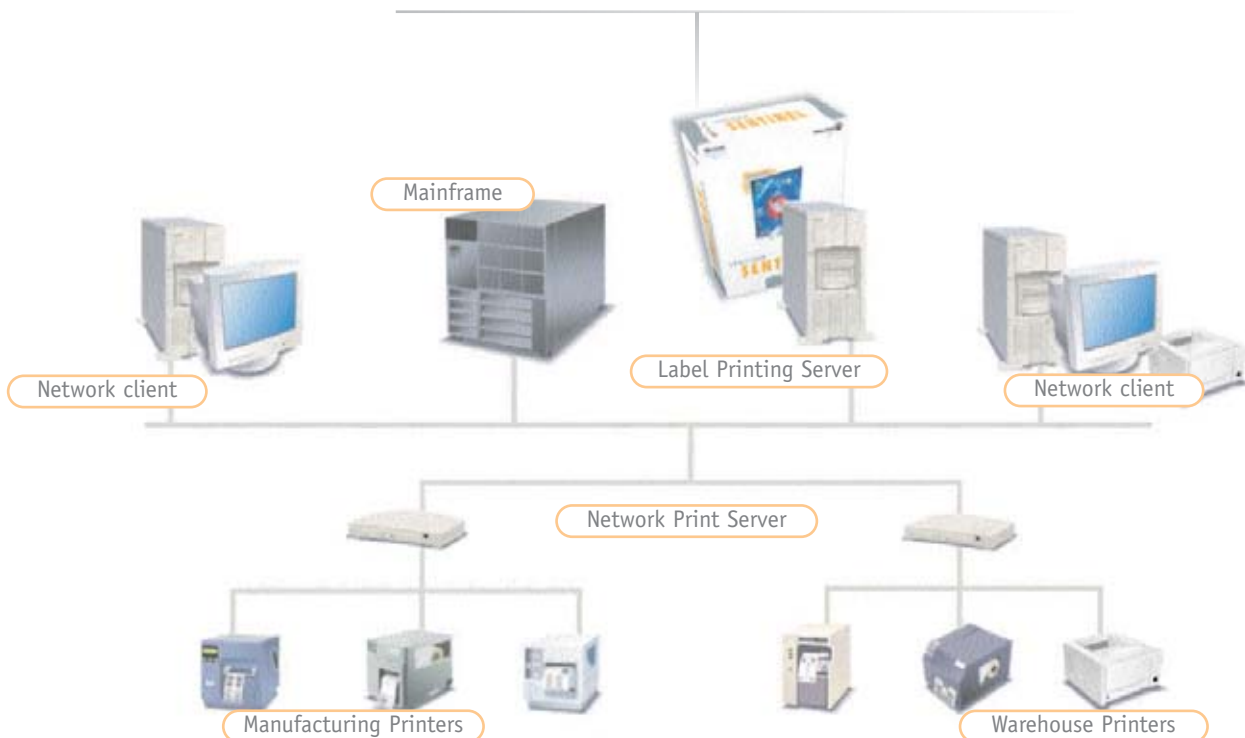
### CENTRALIZED LABEL SERVER ADMINISTRATION

- Real-time management
- Easy integration
- Fast and powerful output
- No custom programming

### SECURITY

- Runs as a service on a Windows NT, 2000, 2003 server
- Database is secure from the printing process
- Records print jobs
- Prints 24 hours a day to hundreds of printers

## SENTINEL Workflow



# SENTINEL™ S/5

## SENTINEL— The link between ERP and bar code printers

### A Proven Solution

SENTINEL S/5 is the last generation print server application with a proven capacity to work in industrial environments and handle high throughput printing demands.



Your Teklynx Certified Integrator



France	Germany	United States	Canada	Singapore	China	Japan
33-562-601-080	49-6103-30026-0	1-414-535-6200	1-905-771-4104	65-6477-7293	86-21-6100-6588	81-45-461-3603

Copyright 2005 Bratou Groupe sarl. All rights reserved. SENTINEL, IDEAM, CODESOFT and LABELVIEW are trademarks or registered trademarks of Bratou Groupe sarl. All brands and product names are the trademarks of their respective owners.



[www.teklynx.eu.com](http://www.teklynx.eu.com)

